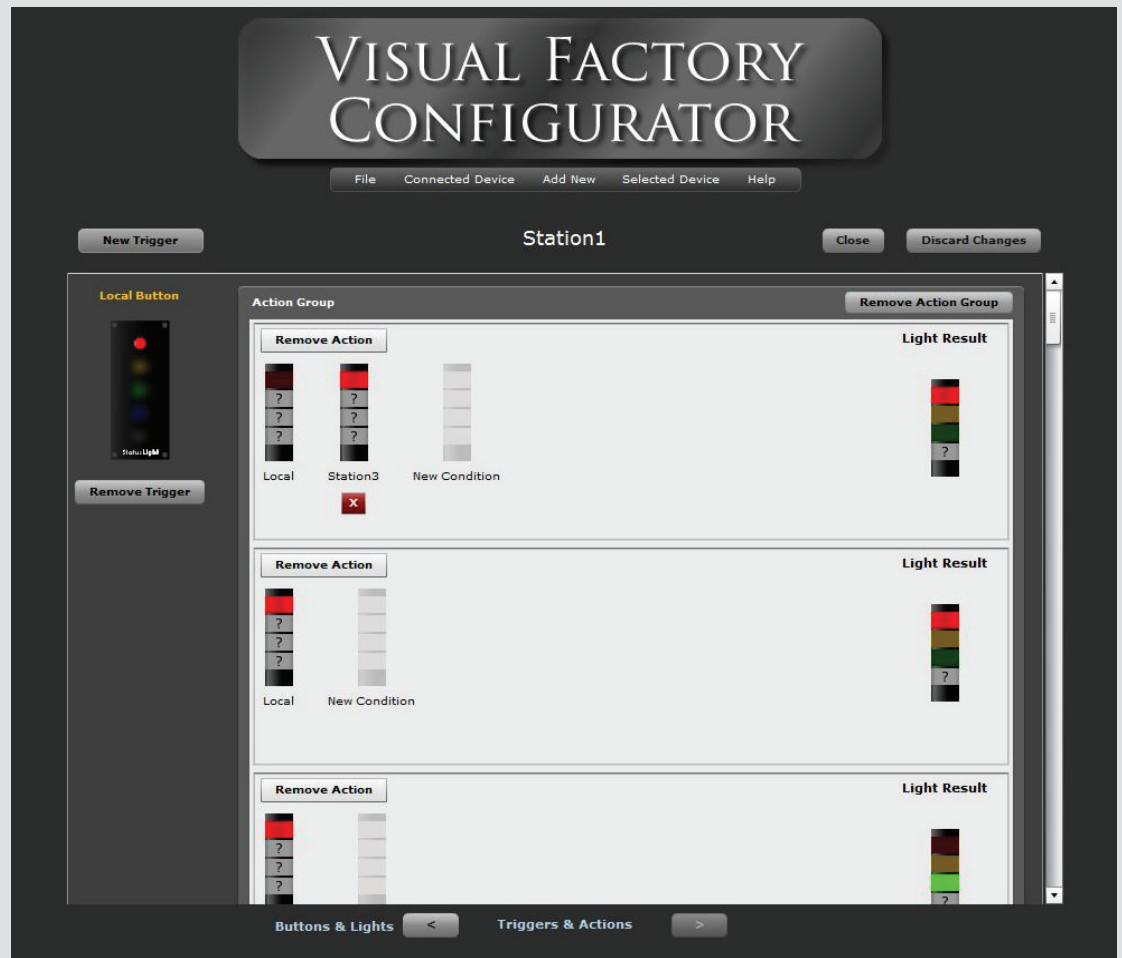


# STATUSLIGHT

VISUAL FACTORY CONFIGURATOR

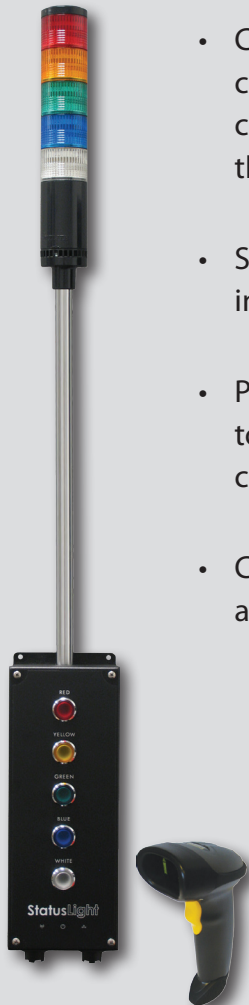
StatusWatch





The StatusLight Visual Factory Configurator (VFC) allows users to create a completely customizable system with as many conditions and outputs as desired.

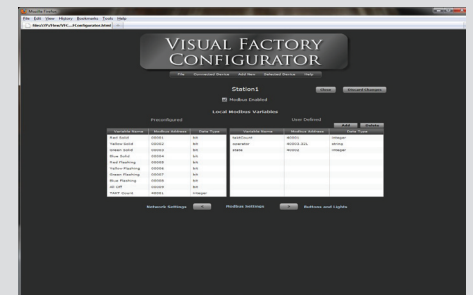
- A web-based configuration provides users access to StatusLight settings without needing to install software.
- Create relationships amongst StatusLights. Make configuration changes on one device and have those changes automatically propagated to all devices on the network.
- StatusLight buttons can be mapped to any number of individual StatusLights on the network.
- Point-and-click graphical user interface makes it easy to configure everything from RFID or barcode input to complex remote light control.
- Create a connection to StatusWatch for sending data about current light states or input from barcodes, etc.



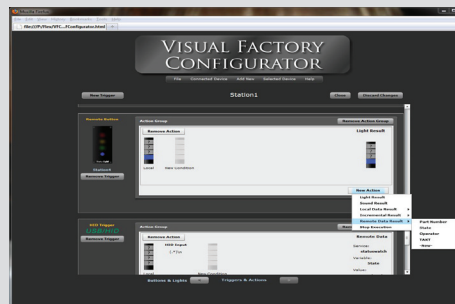
Configure all StatusLight button presses and other HMI devices.



StatusLights can be configured to either flash or light steady based on button press sequences.



Create local data variables that can be accessed via Modbus TCP.



Create new actions to occur from StatusLight user input.