

# StatusLight<sup>SMART</sup>ANDON



## Connectivity

Dual Ethernet Ports (with support for redundant ring topology coming soon)

Wireless communications through a Zigbee based protocol utilizing a mesh topology which allows for a redundant, self-healing network

2.4 GHz frequency will not interfere with existing 802.11 WiFi based networks

RS232

## Expandability

USB with support for many HID compliant devices such as RFID card readers and barcode scanners

Integrated RFID badge reader option

## Interoperability

Data collection and control available via industry standard Modbus TCP protocol

Each light in the stack accessible through its own Modbus TCP address

Modbus TCP communication available on both Ethernet and wireless models

## Available Hardware Configurations

From 0 to 5 illuminated push buttons per StatusLight

From 0 to 5 lights available (Red, Yellow, Green, Blue, White)

Up to 8 digital inputs and 8 digital outputs available

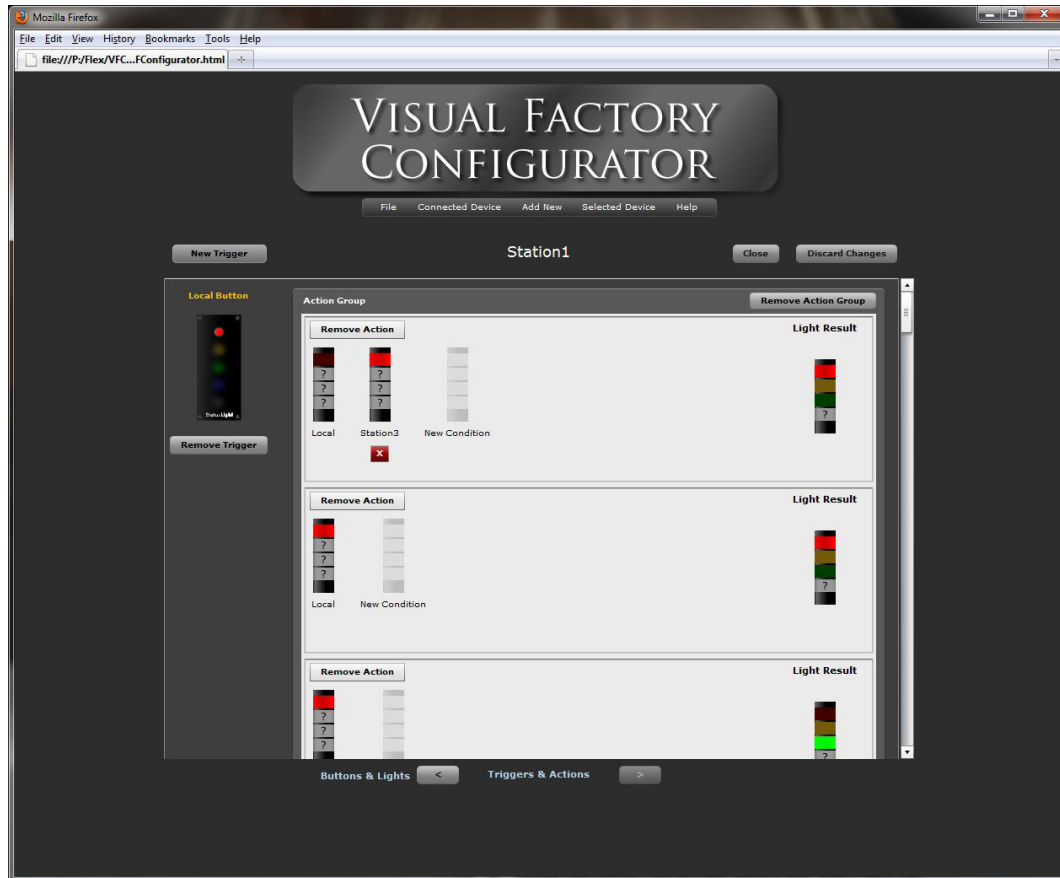
Standard mast height is 1000mm, 300mm also available upon request

StatusLights can be configured with a detached option where the stack light can be mounted separately from the push button box

Power input from 100-240V at 50/60Hz

# StatusLight<sup>SMART</sup> ANDON

## VISUAL FACTORY CONFIGURATOR



### User Configurable Features

Web based configuration utility; no software to install

Configure all StatusLight family devices (StatusLights, Wireless Sounder, LED/LCD Displays, Wireless Gateway, etc.) from one location

Make configuration changes on one device and have those changes automatically propagated to all devices on the network

Point and click graphical user interface makes it easy to configure everything from RFID or Barcode input to complex remote light control

Create local data variables that can be accessed via Modbus TCP

Create a connection to StatusWatch for sending data about current light state or input from Barcodes, etc.

Create triggers on one StatusLight to perform actions on one or more other StatusLights

**SCADAware**

1602 Rhodes Lane, Bloomington, IL 61704 • 309-665-0135 | Fax: 309-665-0975 • info@scadaware.com | www.scadaware.com